

**18V HAMMER DRILL / DRIVER**

Part No CHDDR18

A powerful 18V tool for high torque drilling, screw driving and percussion drilling.

- 4 pole frameless motor generating an impressive 75Nm of torque
- Variable speed trigger for enhanced control
- Percussion mode for masonry and stone drilling.
- Large ergonomic soft grip for comfortable use. optimises balance while drilling overhead

**Specifications**

Battery Pack	18 V / 3.0 Ah
Battery Type	Li-Ion
No Load Speed (1st gear / 2nd gear)	0 - 450 / 0 - 1800 rpm
Beats Per Minute (1st gear / 2nd gear)	0 - 7200 / 0 - 28000 bpm
Max. Drilling Capacity Steel / Wood /	
Masonry	13 / 38 / 16 mm
Torque Settings	24
Max. Torque	75 Nm
Weight incl. Battery	2.6 kg

**18V ANGLE GRINDER**

Part No CAGR18

The Ramset™ R18 Lithium Ion cordless angle grinder is ideal for a variety of cutting and finishing jobs on the building site..

- 4 pole frameless motor delivers 9000 rpm
- Overload protection to protect the motor and the battery
- Paddle switch design mechanism increases control and comfort

**Specifications**

Battery Pack	18 V / 3.0 Ah
Battery Type	Li-Ion
Rated Speed	0 - 9000 rpm
Disc Diameter	115mm
Handle positions	3
Spindle Ø	M14
Weight incl. Battery	2.4kg

**18V IMPACT DRIVER**

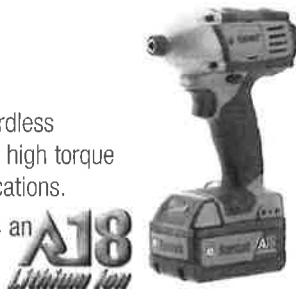
Part No CIDR18

The Ramset™ R18 Lithium Ion cordless impact driver is a high speed and high torque tool for fixing and fastening applications.

- 4 pole frameless motor delivers an impressive 158Nm of torque
- 1/4" Hex bit holder
- Lightweight, compact design
- Variable speed trigger for enhanced control
- LED lighting for working in dark spaces

**Specifications**

Battery Pack	18 V / 3.0 Ah
Battery Type	Li-Ion
No Load Speed	0 - 2200 rpm
Beats Per Minute	3200 bpm
Bit Retention	1/4" Hex
Torque	158Nm
Weight incl. Battery	1.8kg

**18V IMPACT WRENCH**

Part No CIWR18

A powerful 18V impact wrench for fast and easy fastening of large construction anchors, such as Boa™ Coil.

- Massive 610Nm of torque
- Dynamic brake stops unit immediately after switch is released for faster socket changes
- Variable speed trigger for enhanced control
- Large soft grip handle reduces vibration

**Specifications**

Battery Pack	18 V / 3.0 Ah
Battery Type	Li-Ion
No Load Speed	0 - 1900 rpm
Impact Rate	0 - 2200 lpm
Drive Shank Square	1/2" Square Drive
Torque	610 Nm
Spindle Ø	M14
Weight incl. Battery	3.0kg

**18V BASE KIT CBASEKITR18**

18V cordless range base tool kit. Add tools to this base kit.

**Contents of kit**

Part No	Description	Order Qty
CBASEKITR18	18V Base Kit (2x Batteries CBATR18HD, 1x Charger CCR18, 1x Bag CKITBAG)	1 KIT

Items can also be purchased individually.

**4.1 Identification****Panel ID Plates**

Cast into panels for clear identification, specifications and quality control details. Available in several colours.



Description	Size (mm)	Pack Qty	Pallet Qty	Colour	Part No
Panel ID Plate	180 x 100	60	4480	Blue	FWPLATEBL
				Brown	FWPLATEBN
				Green	FWPLATEGN
				Orange	FWPLATEO
				Red	FWPLATER
				White	FWPLATEW
				Yellow	FWPLATEY

**4.2 Reinforcing****Reidbar™ Systems**

Reidbar™ is a 500N Grade continuous threaded reinforcing system, enabling fast, easy and efficient reinforcement connections in any concrete structure.

- No need for complex calculations
- Components achieve ultimate bar capacity and full bar strength
- More effective engineered connections
- Simple, easy to use. No special tools required. Fast, no-fuss connections
- Simplified detailing
- Complete system for all applications
- No protruding bars in precast elements
- Reduced formwork damage
- Reduced OH&S risk
- Increased productivity
- Meets the requirements of 'Steel Reinforcing Materials, AS/NZS4671:2001'
- Improved structural integrity
- Ultimate strength development with short embedment
- Suitable for thin concrete sections



Reidbar™ Starters™, a screw-in method of connecting concrete structural elements including floors and walls.



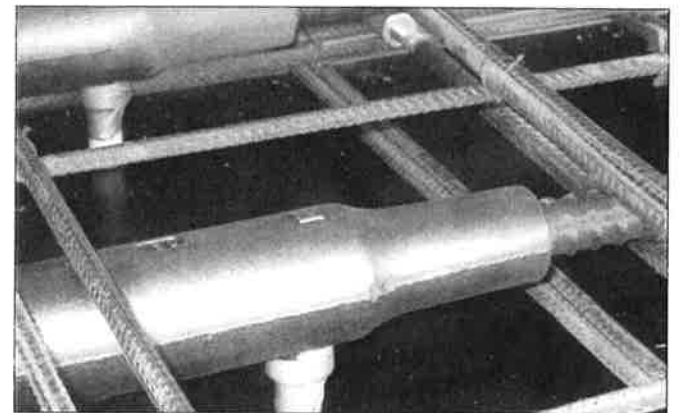
Reidbar™ continuous threaded reinforcing can be used to lift any size concrete element.



Reidbar™ was used as a designed lifting system to lift 200 Tonne Bridge Beams on the Kwinana Freeway Perth WA project utilising reusable lifting plates fastened with Reidbar™ nuts.



Reidbar™ Inserts™ used with ReidBox™ to simplify installation of floor to wall connections.



Reid Grouters™ offer a splicing solution for reinforcing bars ensuring full strength continuity.

## 4.2 Reinforcing (cont'd)

## REIDBAR™ REO™

Continuously threaded, hot rolled, Grade 500N reinforcing bar to AS4671. Achieves efficient continuous reinforcing throughout the whole job. It is recommended that all *Reidbar™ Reo* is saw cut when used with *Reidbar™* fittings.



Bar Type	Length (m)	Bundle Qty (approx 2 tonnes)	Part No Black
RB12	6	364	RB126
RBA16	6	206	RBA166
RBA20	6	132	RBA206
RB25	6	85	RB256
RB32	6	52	RB326

Also available cut to length (straight) or processed (bent) to your requirements. 2 day lead times for deliveries in major capital cities. **NOTE:** Galvanised bar is available upon request and subject to lead times depending on order requirements. Please contact *Reid™* Sales for more information.

For cut to length or processed *Reidbar™ Reo*, provide us with specifications as follows:

- Cut to length only. Detail size (diameter), part number, length and quantity required.
- Processed. Include all dimensions, drawing number and quantity required for each item with your order.

**NOTE:** For cut to length or processed bar, delivery lead times are a minimum of five working days from receipt of order and all order details (unless otherwise specifically agreed in writing by *Reid™*). Orders for processed bar cannot be cancelled or returned.



## REIDBAR™ STARTERS

Pre-cut bar connections for fast full strength reinforcing. Grade 500N bar to AS4671



Bar Type	Length (mm)	Bundle Qty	Part No
RB12	540	25	RB12SB
RBA16	660	20	RBA16SB
RBA20	850	10	RBA20SB
RB25	1150	10	RB25SB
RB32	1450	10	RB32SB

## REIDBAR™ ANTENNA CAPS

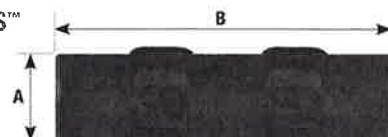
Used to locate inserts or couplers after concrete pour and prevent entry of slurry into the thread.

To Suit	Pack Qty	Part No
RB12TI, RB12C	100	ANTCAPRB12
RBA16TI, RBA16C	100	ANTCAPRB16



## REIDBAR™ COUPLERS™

Internally threaded couplers for joining *Reidbar™*.



Bar Type	(A) Diameter (mm)	(B) Length (mm)	Hex A/F (mm)	Pack Qty	Part No
RB12	22	90	25	100	RB12C
RBA16	30	102	30	25	RBA16C
RBA20	35	129	37	20	RBA20C
RB25	43	180	45	10	RB25C
RB32	55	210	57	10	RB32C

**NOTE:** Galvanised couplers available. Lead time may apply.

## REIDBAR™ TO METRIC COUPLERS™\*

The *Reidbar™ to Metric Coupler* is ideal when a fully engineered, full capacity fixing is required close to an edge, along an edge of a panel or at close spacings. The premium alternative to ferrule anchor bars. A full bar break system is achieved when using *Reidbar™* Starter Bars and 8.8 grade metric bolts.

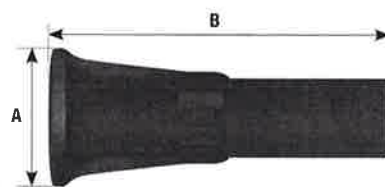


Description	Length (mm)	Hex A/F (mm)	Metric Thread Length (mm)	Pack Qty	Part No	Galvanised Part No
RB12 to M16	90	25	40	70	RB12M16C	RB12M16CG
RBA16 to M20	102	30	45	50	RBA16M20C	RBA16M20CG
RBA20 to M24	122	35	50	20	-	RBA20M24CG

\*Pat App

## REIDBAR™ INSERTS

Inserts for casting into concrete, designed to accept *Reidbar™* bar or starters at a later stage with sufficient embedment for a full strength bar break connection.



Suits	(A) Foot Diam (mm)	(B) Length (mm)	Pack Qty	Part No
RB12	38	100	75	RB12TI
RBA16	50	118	30	RBA16TI
RBA20	64	148	20	RBA20TI
RB25	80	191	10	RB25TI
RB32	101	210	5	RB32TI

Refer to technical data sheets for edge and spacing distance information.

**NOTE:** Galvanised inserts available. Lead time may apply.

*Reidbar™ Inserts* have replaced *Reidbar™ Footplates*

## REIDBAR™ REBATE INSERTS™

Designed to be used in thin walled panels and panels with rebates, where standard *Reidbar™* Inserts will not fit. Includes a cross hole to suit N12 bar. Minimum rebate of 25mm required to achieve bar break connection.



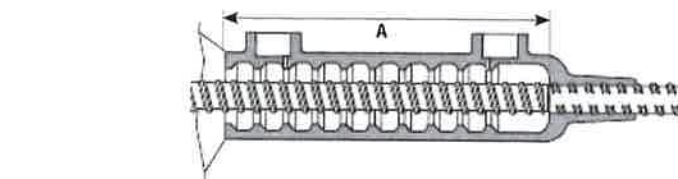
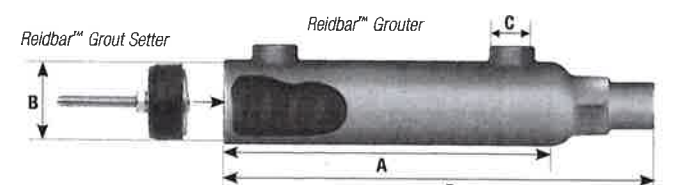
Suits	(A) Foot Diam (mm)	(B) Length (mm)	Cross Hole Diam (mm)	Pack Qty	Part No
RB12	39	78	14.5	60	RB12RI
RBA16	51	96	14.5	30	RBA16RI

## 4.2 Reinforcing (cont'd)

## REIDBAR™ GROUTERS™

Grouters are used for connecting *Reidbar™* lengths where one side of the connection must be female or when converting to standard reinforcing bar. The internal surfaces are ribbed to ensure full bar break after sleeve has been filled with high performance cementitious grout (65MPa, 28 day compressive strength).

Grouter Setting Kits for *Reidbar™ Grouters* enables fixing to formwork prior to pouring and to prevent concrete slurry ingress.



Suits	(A) Max Internal Embedment Depth (mm)	(B) Body ID (mm)	(C) Internal Grout Hole Diam (mm)	(D) Tube Length (mm)	Grouter Part No	Grout Setter Part No
RB12	150	28-40	21	200	RB12GS	RB12GSSET
RBA16	190	32	21	240	RBA16GS	RBA16GSSET
RBA20	224	40	21	290	RBA20GS	RBA20GSSET
RB25	274	48	21	360	RB25GS	RB25GSSET
RB32	320	55	26	445	RB32GS	RB32GSSET

Refer to technical data sheets for recommended grouts.



## Also Available

*Reidbar™* nuts in all sizes in plain and galvanised finish. (refer to page 14)

*Reidbar™* Wingnuts (refer to page 14)

*ReidBrace™* Bracing Systems (refer to page 41)

## REIDBAR™ NAIL PLATES

Supports for fixing to boxing and formwork for positioning all *Reidbar™* internally threaded components.



## REIDBAR™ SEALING CAPS

Used to protect the internal thread of inserts and couplers



Suits	Pack Qty	Part No
RB12TI, RB12C	100	NP12RB
RBA16TI, RBA16C	100	NP16RB
RBA20TI, RBA20C	100	NP20RB
RB25TI, RB25C	100	NP25RB
RB32TI, RB32C	100	NP32RB

## REIDBAR™ STICK-ON SUPPORTS\*

*Reidbar™* Stick-On supports are designed for push on-pull off support ensuring 90° to surface installation.



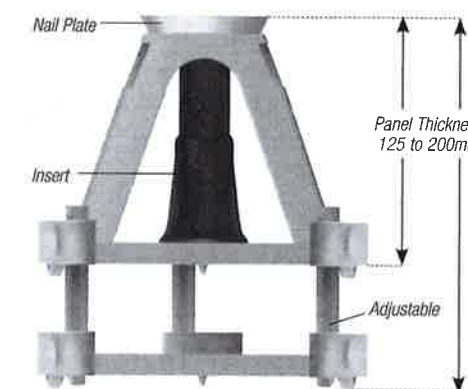
Suits	Pack Qty	Part No
RB12	100	RB12SP
RBA16	100	RBA16SP

\*Pat App

## REIDBAR™ TI CHAIR

Designed to enable *Reidbar™* inserts to be easily used for near face applications in precast elements.

Used in conjunction with the appropriate nail plate, the TI Chair is fully adjustable to suit 125, 150, 175, and 200mm panel thicknesses and can be trimmed for intermediate thicknesses.



Chair	Adaptor	Legs	Panel Thickness (mm)	Pack Qty	Part No
1	1	3	125-200	90	TICHAIR

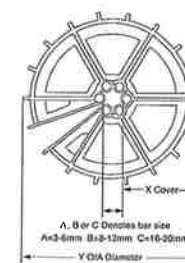
**NOTE:**

- 1: The chair will take all inserts from RB12 to RBA20.
- 2: Use appropriate size nail plate to attach insert into chair.
- 3: Can be used for all metric and coil thread inserts with appropriate nailing plate.

## CIRCULAR SPACER

The unique design offers accurate cover for 360 degrees. It will not twist when in position due to the in-built sleeves which adjusts to hold the bar firmly. As the size of the bar increases the cover remains the same. Ideal for:

- Civil precast and commercial construction
- Columns and piers
- Bar spacers in conduit



Bar Size	X Cover	Y O/A Diameter	Part No
8-12	15	40	CB15CR12
8-12	20	50	CB20CR12
8-12	25	60	CB25CR12
8-12	30	70	CB30CR12
8-12	40	90	CB40CR12
8-12	50	110	CB50CR12
8-12	65	145	CB65CR12
8-12	75	160	CB75CR12